



# Daily Technical Trader - Qatar

June 01, 2026



### QE Index Summary

	31 May 2026	25 May 2026	Chg
Index	10,555	10,592	-0.3%
Value QR (mn)	388	1,158	-66.5%
Trades	18,364	26,136	-29.7%
Volume (mn)	135	265	-49.0%
Stocks Traded	54	54	0.0%
Gainers	22	12	83.3%
Losers	28	38	-26.3%
Unchanged	4	4	0.0%

Source: Qatar Stock Exchange

### Weekly Market Recommendations:

Time Frame	Trend	Current Level	Target	Support	Resistance
Short-term (31May -04Jun)	➔	10,554.96	10,700	10,250	10,900
Medium-term (03Jun- 30Jun)	➔	10,554.96	10,850	10,000	11,000

### Weekly Company Recommendations:

Company Name	Current Price	View	Time Frame	Support	Resistance
AKHI	QR3.123	Positive	Short-term (31May -04Jun)	QR3.000	QR3.225
ORDS	QR13.70	Positive	Medium-term (03Jun- 30Jun)	QR12.67	QR15.15

### Daily Company Recommendations:

Company Name	Current Price	View	Time Frame	Support	Resistance
BRES	QR2.550	Positive	1 Day	QR2.528	QR2.576
GISS	QR2.210	Positive	1 Day	QR2.192	QR2.233
MCGS	QR5.635	Positive	1 Day	QR5.591	QR5.690
ORDS	QR13.70	Positive	1 Day	QR13.60	QR13.88

### List of Stocks Close to Technical Levels

Companies Closest to Resistance				
Company	Ticker	Mcap (QRmn)	Price	Resistance
Qatar International Islamic Bank	QIIK	17,134.9	11.320	11.320
Gulf International Services	GISS	4,107.1	2.210	2.212
Qatar Insurance Company	QATI	6,979.7	2.137	2.142
The Commercial Bank	CBQK	17,241.3	4.260	4.265
Ezdan Holding Group	ERES	23,182.8	0.874	0.883

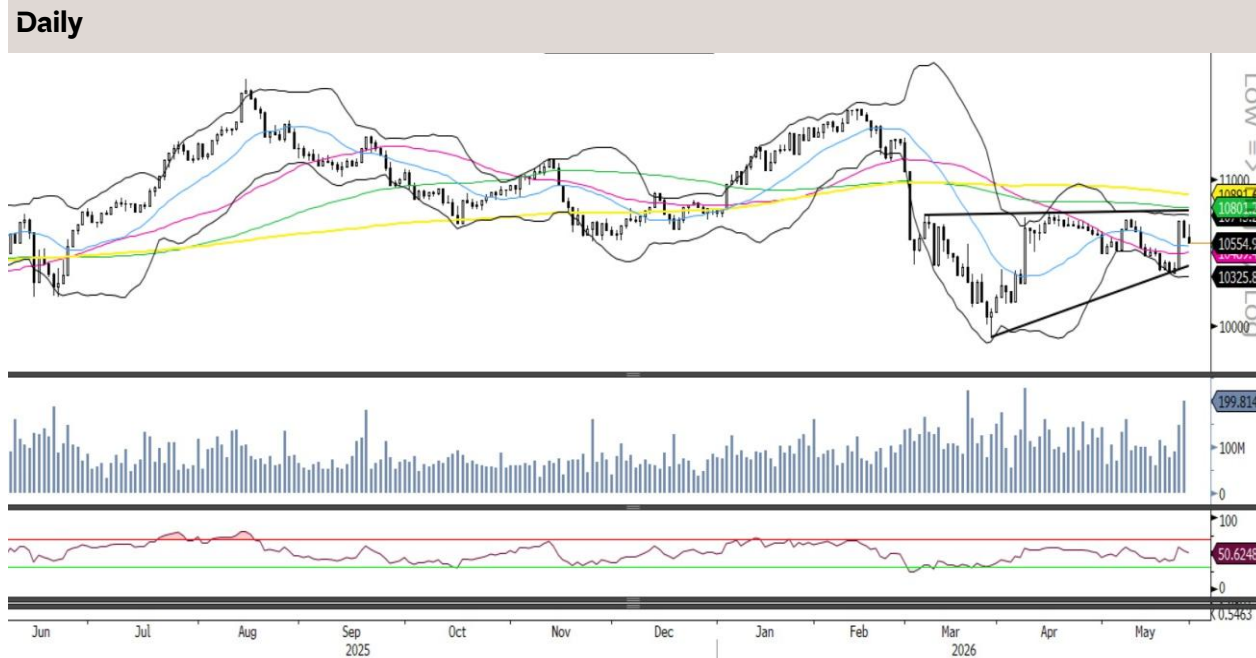
Companies Closest to Support				
Company	Ticker	Mcap (QRmn)	Price	Support
Doha Bank	DHBK	8,117.0	2.618	2.612
Ezdan Holding Group	ERES	23,182.8	0.874	0.870
Qatar Aluminium Manufacturing Company	QAMC	9,609.0	1.722	1.716
Baladna	BLDN	2,819.3	1.315	1.306
Qatar Gas Transport Company Ltd.	QGTS	23,989.3	4.330	4.319

Companies with RSI over 70 (Overbought)				
Company	Ticker	Mcap (QRmn)	Price	RSI
Al Khaleej Takaful Group QSC	AKHI	792.6	3.105	74.26
Barwa Real Estate Co	BRES	9,922.7	2.550	68.12
Estithmar Holding QPSC	IGRD	19,276.4	4.290	67.77
Lesha Bank LLC	QFBQ	2,268.0	2.025	64.92
Qatar Oman Investment Co QSC	QOIS	150.5	0.836	63.54

Companies with RSI below 30 (Oversold)				
Company	Ticker	Mcap (QRmn)	Price	RSI
Qatar National Cement Co QSC	QNCD	1,834.5	2.807	20.81
Aamal Co	AHCS	4,832.1	0.767	24.40
Qatar Industrial Manufacturing Co QSC	QIMD	1,045.9	2.201	32.27
Qatar Fuel QSC	QFLS	14,019.0	14.100	33.15
Al Meera Consumer Goods Co QSC	MERS	2,713.0	13.170	33.17

Source: Refinitiv, QNBFS Research

**QE Index- Technical Charts**



Source: Bloomberg, QNBFS Research



Source: Bloomberg, QNBFS Research



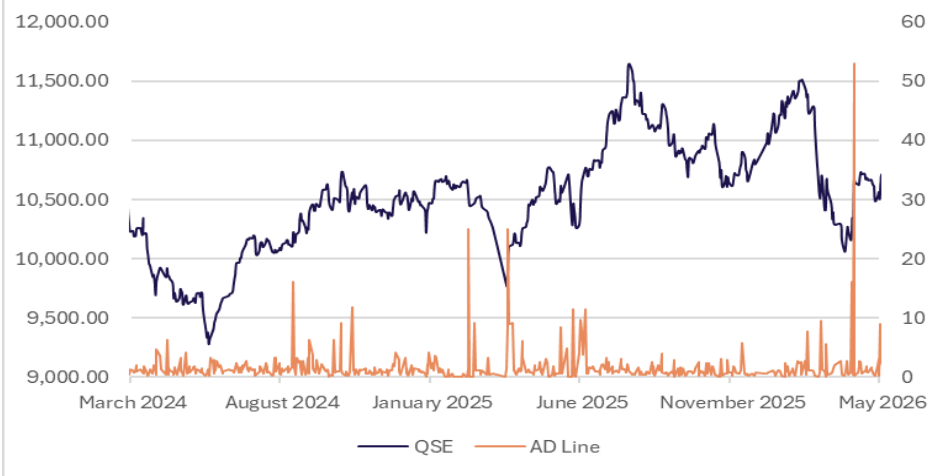
Source: Bloomberg, QNBFS Research

The QE Index slid lower for the second consecutive session on the back of profit-booking. Meanwhile, the Index failed to make any further headway above 10,700 and drifted lower. However, the Index continues to remain above its 50-DMA currently near 10,490, which is a strong support. On the upside, the Index needs to sustain above 10,660, to continue its rebound towards 10,730. Strong support for the Index is near its 50-DMA.

The QE Index bounced back and closed the truncated week on the upside. Meanwhile, the Index momentarily moved above both its 100-WMA currently near 10,645 and 200-WMA currently near 10,700, however, failed to sustain above it and trimmed its gains. Overall broader trend remains on the downside, and the Index can drift lower towards 10,440 followed by 10,350. However, a close above both its 100-WMA and 200-WMA can test 10,900.

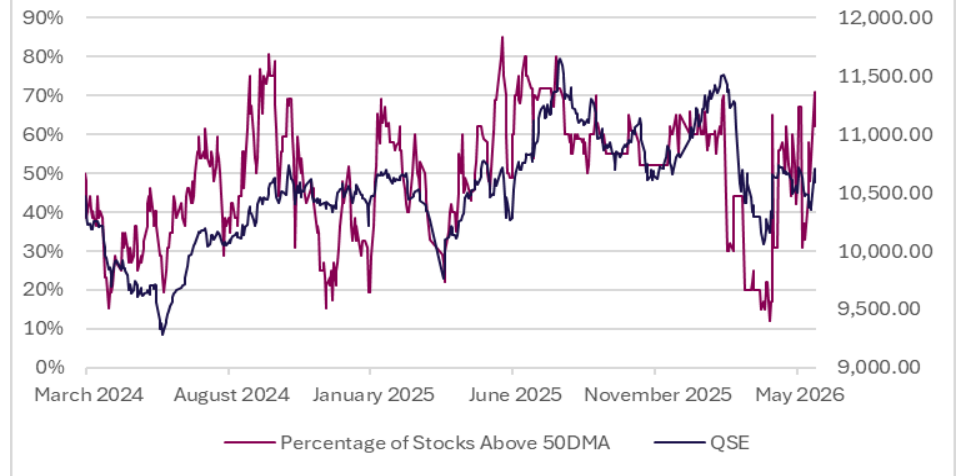
The QE Index has been showing a rebound after witnessing correction over the past two months. Moreover, the Index managed to close above its 100-MWA currently near 10,550, showing signs of the bounce back to continue. However, the Index needs to sustain above 10,500 to move higher towards its 50-MWA currently near 10,900. On the downside, any sustained weakness below 10,500 can drag the Index lower to test its 200-MWA near the 10,050 level.

**Advance/Decline Line**



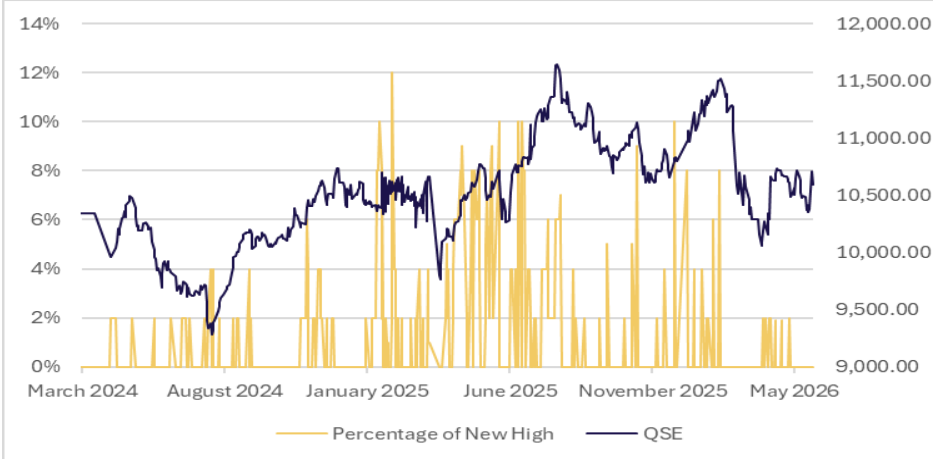
Source: Refinitiv, QNBFS Research

**Percentage of Stocks Above 50-day Moving Average**



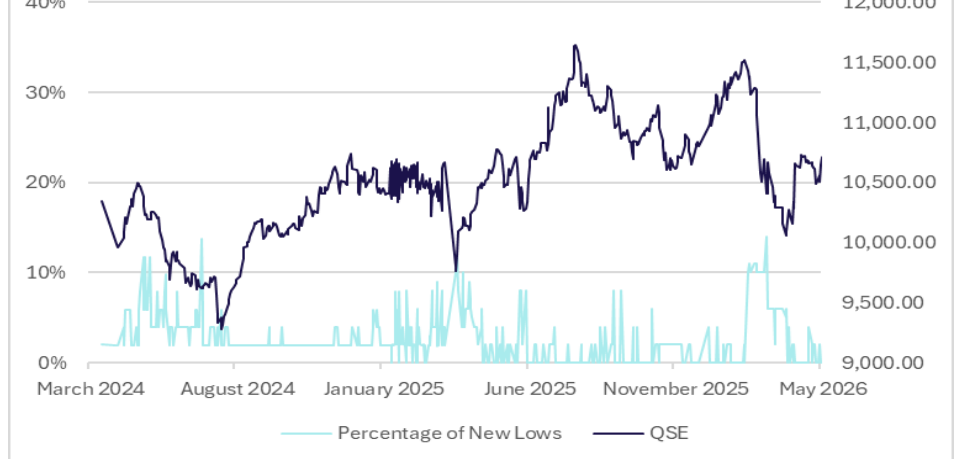
Source: Refinitiv, QNBFS Research

**Percentage of New Highs to Total Market**



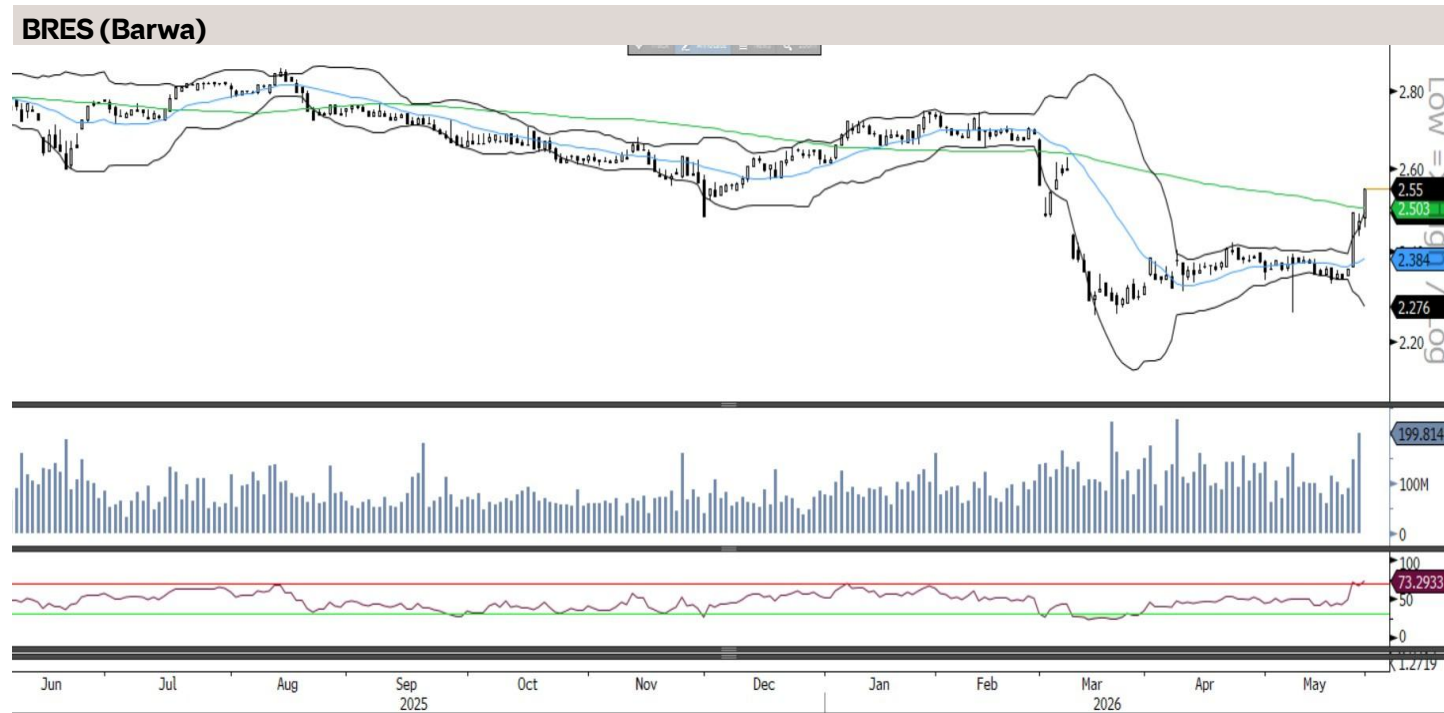
Source: Refinitiv, QNBFS Research

**Percentage of New Lows to Total Market**



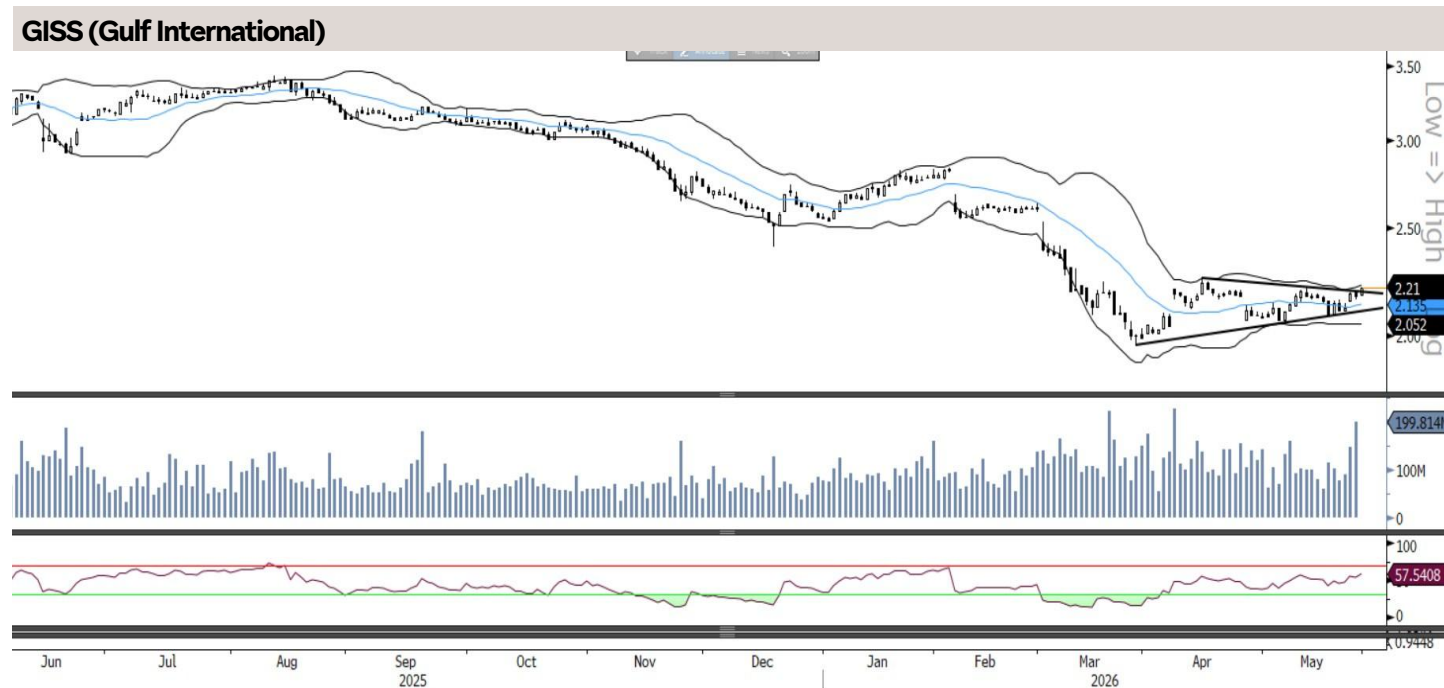
Source: Refinitiv, QNBFS Research

**Daily Company Recommendations**



BRES has been moving higher over the past few days and breached its 100-DMA with a bullish candle, indicating the upside momentum to continue. The RSI line is showing strength. Traders can initiate buy positions above QR2.558, for a target of QR2.576, with a stop loss at QR2.528.

Source: Bloomberg, QNBFS Research



GISS managed to breach above its symmetrical triangle trendline resistance with increased volumes, after several days of consolidation, showing signs of a possible rally ahead. The RSI line is in the buy zone. Traders can initiate buy above QR2.215, for a target of QR2.233, with a stop loss at QR2.192.

Source: Bloomberg, QNBFS Research

**Weekly Company Recommendations**

**AKHI (Alkhaleej Takaful)**



On the weekly charts, we re-iterate buy on AKHI, as the stock continues to move higher and close above the upper end of the bollinger band for the third consecutive week, indicating the upside momentum can continue. The stock is also above all the moving averages, showing strength. The weekly RSI is in the bullish zone. Traders can continue to hold their existing positions and add above QR3.140, with a new stop loss of QR3.000 for a revised potential target of QR3.225.

Source: Bloomberg, QNBFS Research

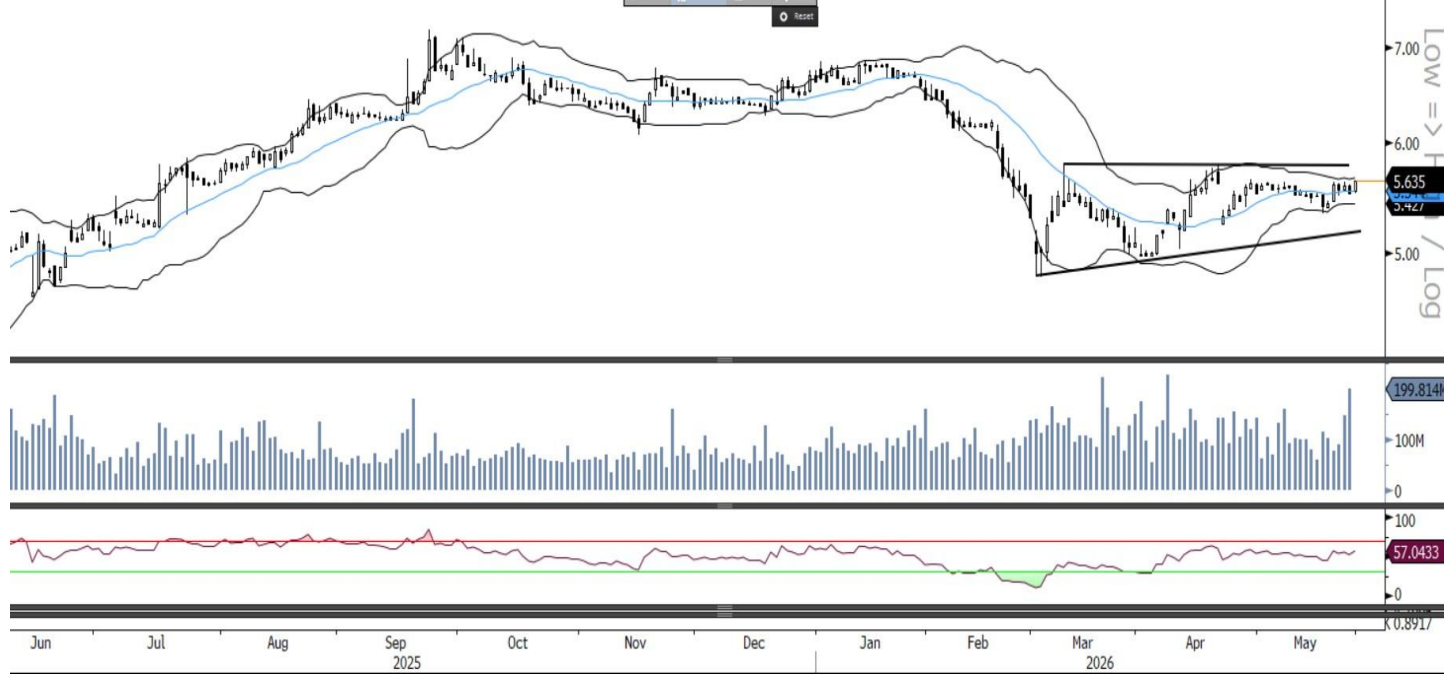
**ORDS (Ooredoo)**



On the monthly charts, ORDS has been moving sideways but staying above its mid-bollinger band in a rising band, indicating the stock is gearing up for a breakout soon. Moreover, the stock is trading above all its moving averages, showing strength. The RSI line is in the bullish zone. Investors can consider buying the stock above QR13.85 for a breakout confirmation, with a stop loss of QR12.67, for a potential target of QR15.15.

Source: Bloomberg, QNBFS Research

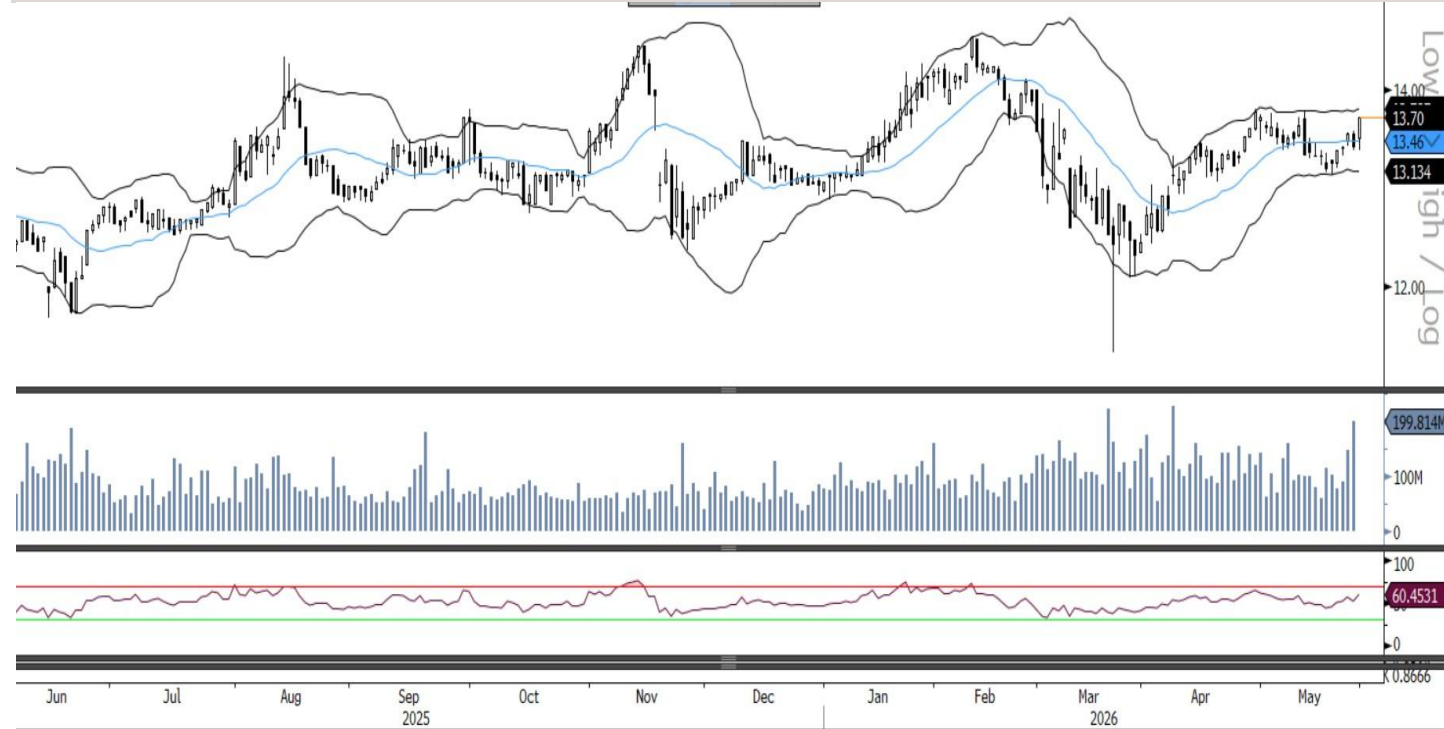
**MCGS (Medicare) - Short Term**



MCGS managed to move above its small consolidation zone and close near its upper end of the bollinger band, showing signs of an upside pullback. The RSI line is in the positive zone. Traders can initiate buy positions above QR5.648, for a target of QR5.690, with a stop loss at QR5.591.

Source: Bloomberg, QNBFS Research

**ORDS (Ooredoo)- Medium Term**



ORDS continued its rebound above its mid-bollinger band with large volumes, indicating signs of a further upside. The RSI line is in the bullish zone. Traders can initiate buy positions above QR13.78, for a target of QR13.88, with a stop loss at QR13.60.

Source: Bloomberg, QNBFS Research

## Contacts

### **QNB Financial Services Co. W.L.L.**

Contact Center: (+974)4476 6666

[info@qnbfs.com.qa](mailto:info@qnbfs.com.qa)

Doha, Qatar

### **Shahan Keushgerian**

Senior Research Analyst

[shahan.keushgerian@qnbfs.com.qa](mailto:shahan.keushgerian@qnbfs.com.qa)

### **Saugata Sarkar, CFA, CAIA**

Head of Research

[saugata.sarkar@qnbfs.com.qa](mailto:saugata.sarkar@qnbfs.com.qa)

### **Phibion Makuwerere, CFA**

Senior Research Analyst

[phibion.makuwerere@qnbfs.com.qa](mailto:phibion.makuwerere@qnbfs.com.qa)

### **Dana Saif Al Sowaidi**

Research Analyst

[dana.alsowaidi@qnbfs.com.qa](mailto:dana.alsowaidi@qnbfs.com.qa)

Disclaimer and Copyright Notice: This publication has been prepared by QNB Financial Services Co. W.L.L. ("QNBFS") a wholly-owned subsidiary of Qatar National Bank (Q.P.S.C.). QNBFS is regulated by the Qatar Financial Markets Authority and the Qatar Exchange. Qatar National Bank (Q.P.S.C.) is regulated by the Qatar Central Bank. This publication expresses the views and opinions of QNBFS at a given time only. It is not an offer, promotion or recommendation to buy or sell securities or other investments, nor is it intended to constitute legal, tax, accounting, or financial advice. QNBFS accepts no liability whatsoever for any direct or indirect losses arising from use of this report. Any investment decision should depend on the individual circumstances of the investor and be based on specifically engaged investment advice. We therefore strongly advise potential investors to seek independent professional advice before making any investment decision. Although the information in this report has been obtained from sources that QNBFS believes to be reliable, we have not independently verified such information and it may not be accurate or complete. QNBFS does not make any representations or warranties as to the accuracy and completeness of the information it may contain, and declines any liability in that respect. For reports dealing with Technical Analysis, expressed opinions and/or recommendations may be different or contrary to the opinions/recommendations of QNBFS Fundamental Research as a result of depending solely on the historical technical data (price and volume). QNBFS reserves the right to amend the views and opinions expressed in this publication at any time. It may also express viewpoints or make investment decisions that differ significantly from, or even contradict, the views and opinions included in this report. This report may not be reproduced in whole or in part without permission from QNBFS.